

WiFi Controller Installation Instruction

Warranty No: _____
Please Keep this for warranty

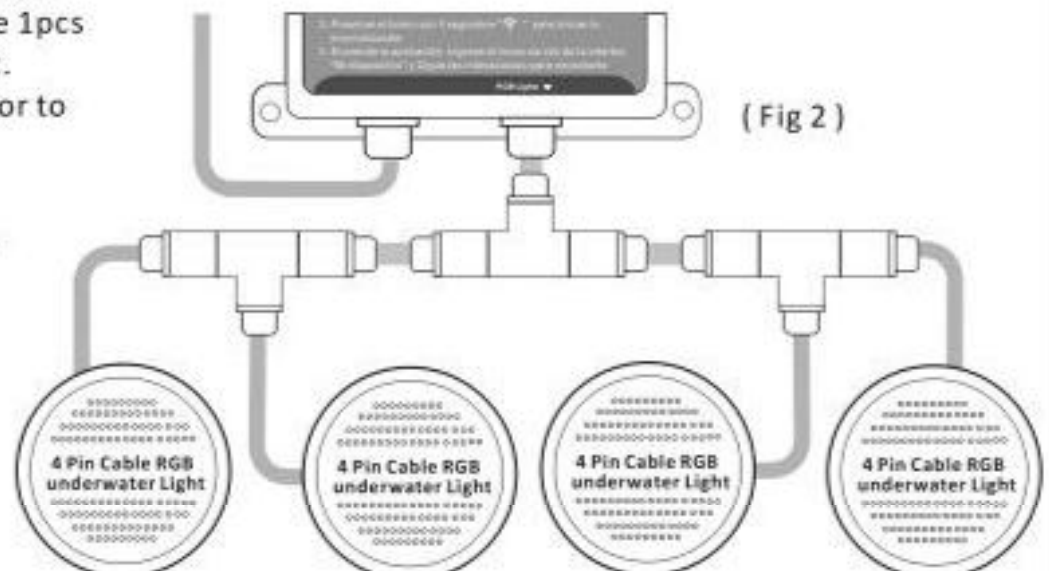
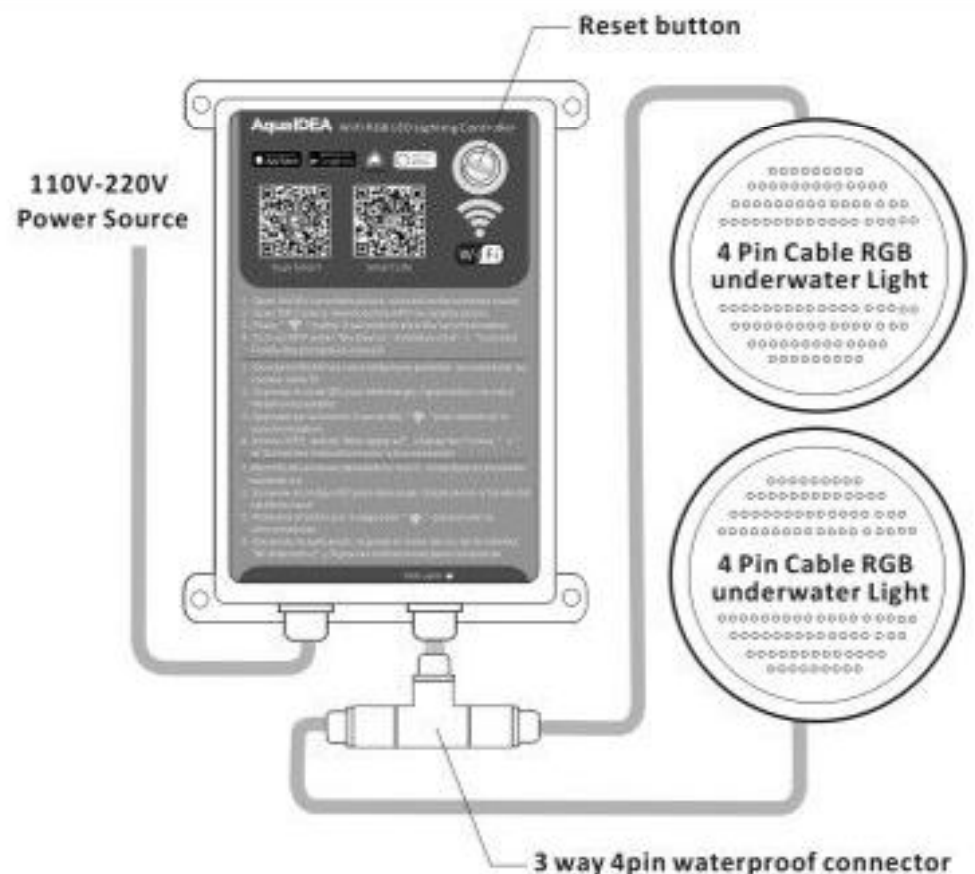
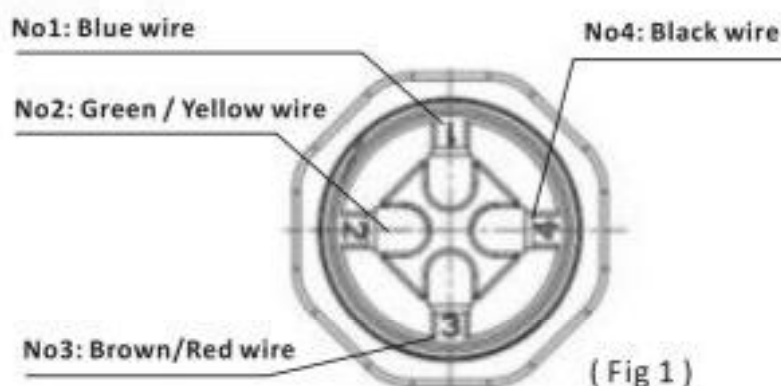
WiFi Remote Control Device can using for all AquaIDEA 4 pin cable RGB colour underwater LED light . This WiFi Remote Control Device must be installed by a licensed technician or certified electrician or a qualified pool serviceman in accordance with all applicable local codes and ordinances. Improper installation may create an electrical hazard which could result in death or serious injury to pool users, installers or others due to electrical shock and may also cause damage to property. Always disconnect power to the pool light transformer at the circuit breaker before servicing the WiFi Remote Controller Device . Failure to do so could result in death or serious injury to serviceman, pool user or others due to electrical shock. WiFi Remote Controller Device voltages are being 110V-220V. DO NOT connect your WiFi Remote Controller Device the incorrect voltage or you may damage your light/Remote and invalidate the warranty.

Data Parameter

- 1/Item version: Single color version, Color temperature version and RGB version
- 2/ Working Voltage: 110V-220V
- 3/ Output voltage: 12V DC 75W
- 4/ Remote distance: 50 meters indoor, 100 meters outdoor
- 5/ Software: Android system (at least version 2.3 with WIFI function) or IOS system.
- 6/ Language : English/Chinese/German
- 7/ Receiver sensitivity: 802.11b DSSS(-5dBm) · 802.11b CCK (-10dBm) · 802.11g OFDM(-15dBm)
- 8/ Connect way: 4 pin cable V+ R, G, B
- 9/ Reset button: Short press 3s : change from gradual change to strobe flash for blue color

Hardware Installation

1. The WiFi Device should be mounted vertically on a solid and rigid surface. Good installation practice, dry and open area for ventilation will maximize the life of the WiFi Device for prolonged usage. Outdoor installation of the is prohibited. It is preferably to be secured by 4 screw and keep a distance from the WiFi Device since water splashes will damage.
2. Wifi Device included 12V 75W DC transformer , it can link up 1-4pcs 15W underwater RGB lights link up 1-8pcs 7W underwater RGB lights link up 1-12pcs 3W-5W underwater RGB lights
3. Connect the pool lights / Marine lights to the 3 Way 4 pin waterproof connector.
1--Blue wire for blue light
2--Green/Yellow wire for green light
3--Brown/ Red wire for red light
4--Black wire for common
(Fig 1)
- 4 Strip the light cable into the 3 way 4 pin waterproof connector . Insert stripped wire into the 4 pin connector tighten with a screwdriver . Our WiFi Device provide 1pcs 3 way 4 pin connector , it can link up 1-2pcs RGB light. You can add another 3 way 4 pin waterproof connector to increase number of lights (Fig 2)



Software Installation

Android and IOS Software:

Running OS Android 2.3 or above, request device have WiFi function
 Running IOS 5.0 or above, such as iPhone, iPad, and iPod touch device
 Install App Visit Google Play or App Store -
 search "Tuya" or "Smart life"
 Language Chinese/English /Germany,



Smart Life App



Tuya App

Smart Life App

Smart Life Softwares:

Once downloaded, the App will ask you to register your device. Enter your phone number or email. If you selected phone number, you will receive a text with a registration code. If you choose email, you will then create password.



You have now successfully created an account and you are now ready to start setting up your Light. Select the Plus (+) in the top right corner to add a device.



Select the Lighting device and connect the WIFI Device to a power source. To enter pairing mode, Press the WIFI Device reset button 3-5 seconds. The light will begin blinking rapidly once in pairing mode.



Connect to your desired Wi-Fi network, enter your password, then select.

Once you select after entering your password, the app will start to pair the light to your app. If you get a message that says "Failed to Add" You may have to enter the pairing mode again, and repeat again.



Once your light successfully connects to the app, the below screen will pop up and you can change the name of the light. For Example: Fixture. It's best to make this simple so that if you would like to connect this to your Alexa App / Google Home, it will be easier for the smart assistant to understand which light you would like to control. After naming your Smart light, select **DONE**. You are now able to control your life in Smart Life APP



Tuya App

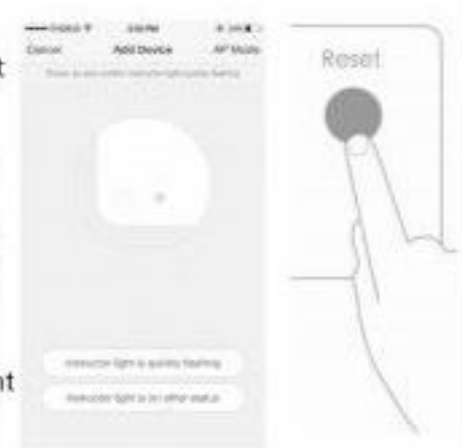
Tuya Softwares:

Once downloaded, the App will ask you to register your device. Enter your phone number or email. If you selected phone number, you will receive a text with a registration code. If you choose email, you will then create password.



You have now successfully created an account and you are now ready to start setting up your Light.

Go to the App, on "Devices (Prepare)", tap "+" in the upper right of this page. To add device, as shown in the picture. Select the Lighting device and connect the WIFI Device to a power source. To enter pairing mode, Press the WIFI Device reset button 5 seconds. The light will begin blinking rapidly.



Select the Wi-Fi network. Enter password and tap "Next" (Pic1)

For quick connect mode, the App interface will go through the changes during the network configuration process. (PIC2)

the interface when the device is connected successfully (PIC3)



Pic1



Pic2



Pic3

After the device is connected successfully tap "Devices" at the bottom and the name of the light shows in the list. Tap it to enter the control panel. When the device is on line, a green dot at the front of the device icon.



"If you have any question on the APP applications or installation, please visit Smart Life / Tuya official website"